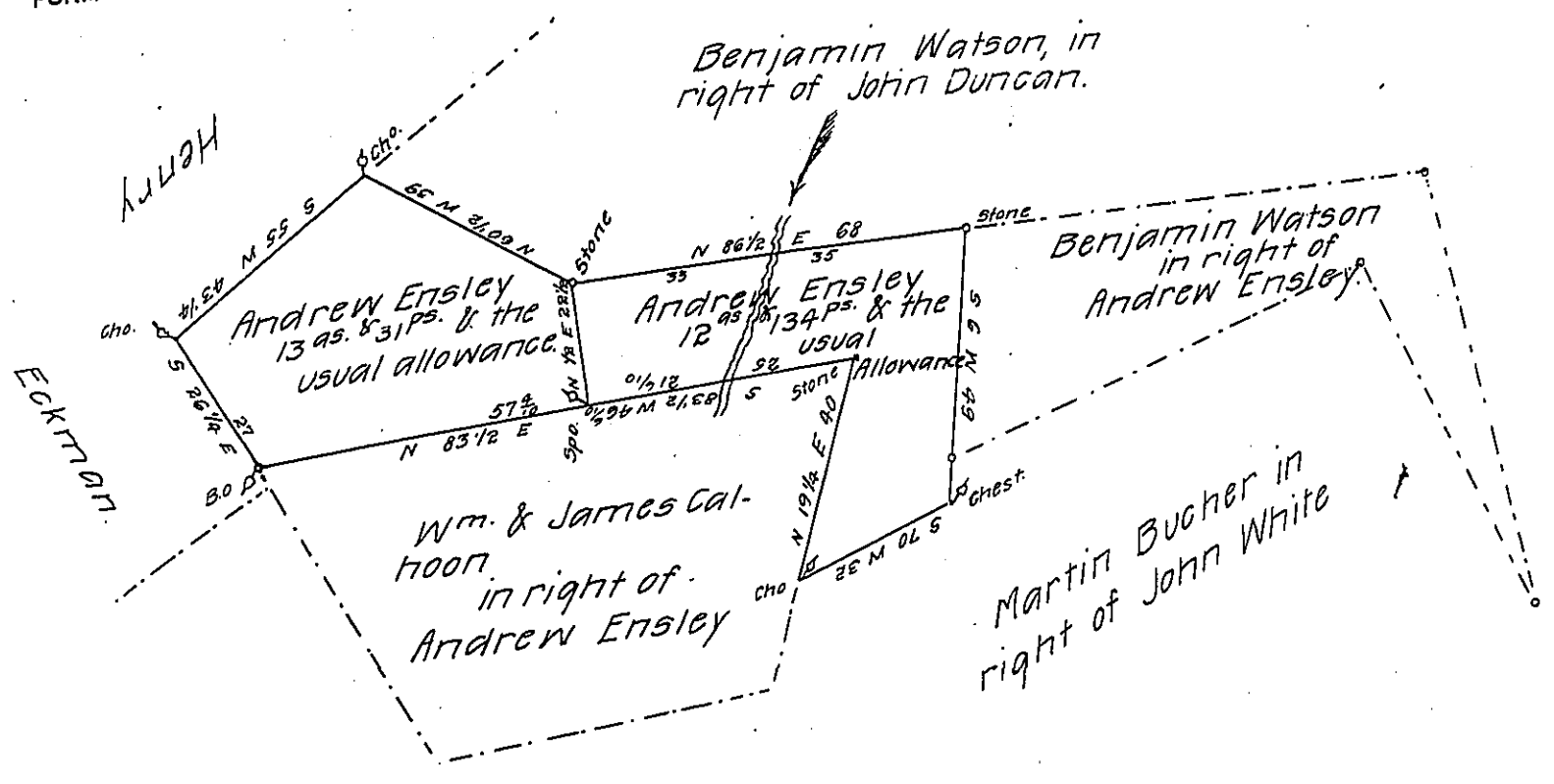


FORM No. 1.



A draught of a tract of land situate in Drumore township Lancaster County containing twenty six acres and five perches and the usual allowance of six per cent for roads (divided as above represented) part of 69^{as.} & the usual allowance by warrant dated the 9th day of March 1753. granted to Andrew Ensley surveyed and divided the above tracts of Land the 4th of November 1812 for Benjamin Watson & Martin Bucher.

Pr. Jacob Hibshman D.S.

I examined the above draught and approve of the same to be accepted, in the Surveyor Generals Office April the Anno domini 1833.

To Jacob Spangler Esqr. Surveyor General. James Calwell D.S.

IN TESTIMONY that the above is a copy of the original remaining on file in the Department of Internal Affairs of Pennsylvania, made conformably to an Act of Assembly approved the 16th day of February 1833, I have hereunto set my hand and caused the Seal of said Department to be affixed at Harrisburg, this third day of January 1908

Henry Howell
Secretary of Internal Affairs.